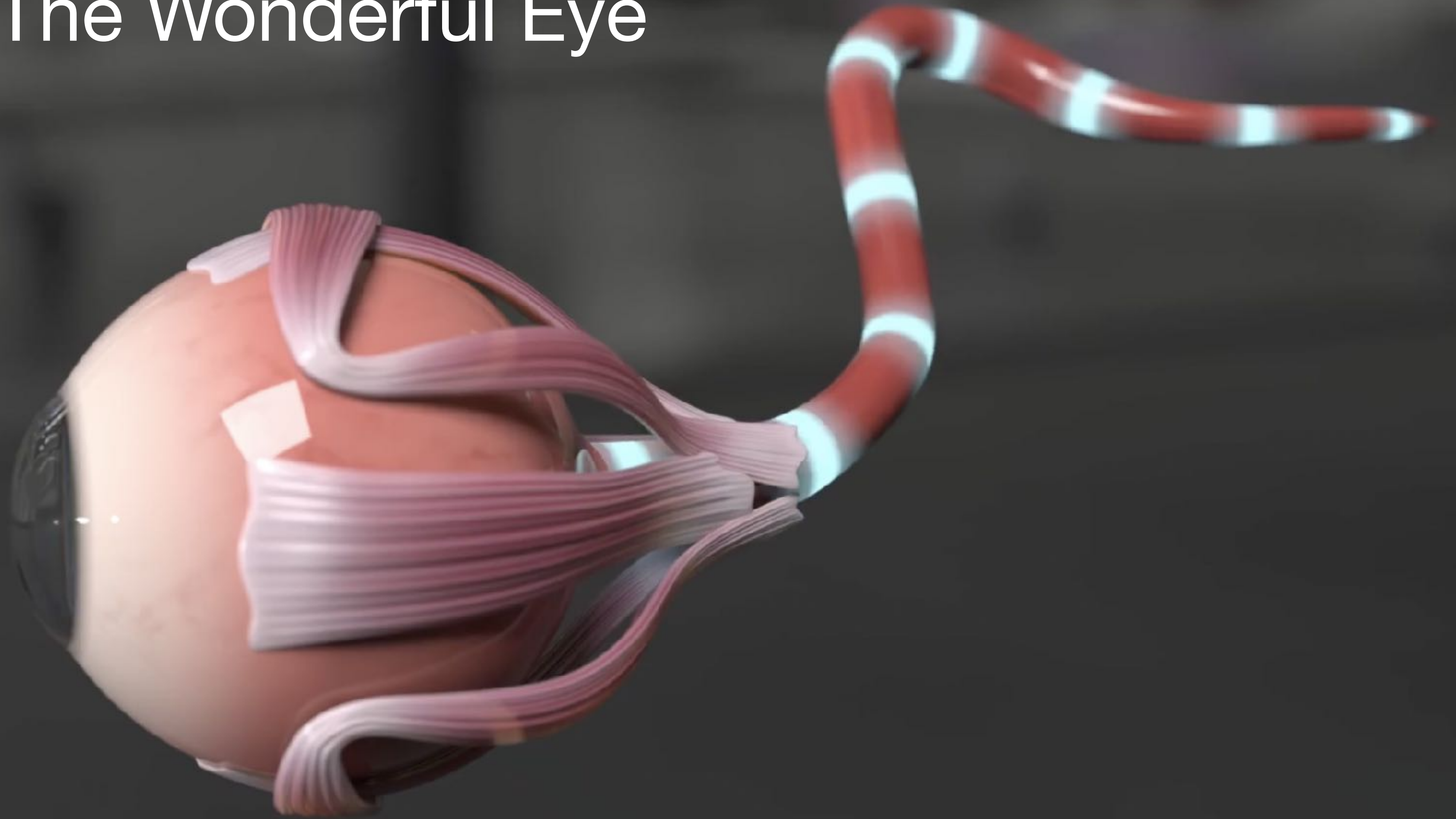
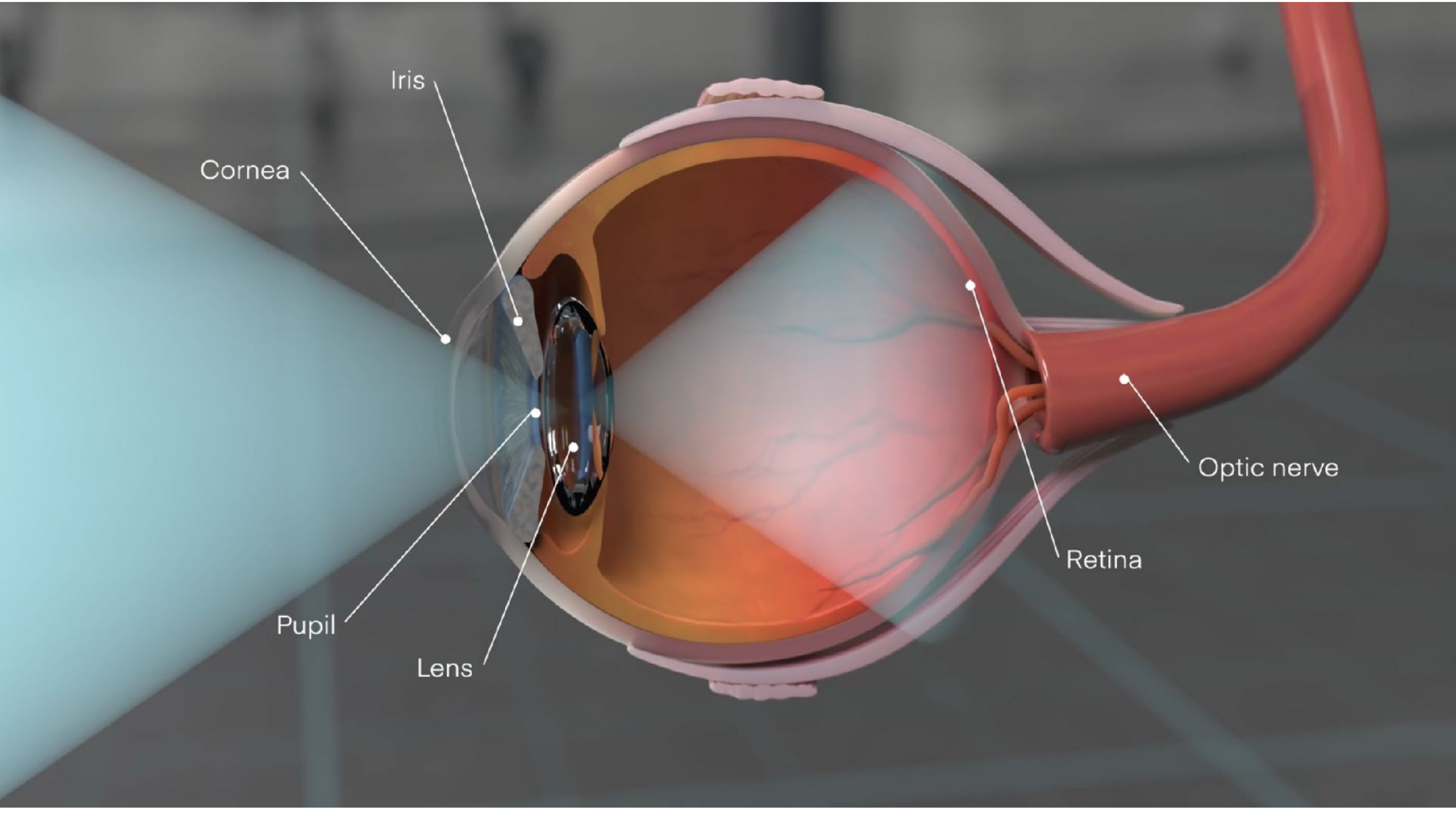


# The Wonderful Eye





Cornea

Iris

Pupil

Lens

Retina

Optic nerve

The **cornea** is the clear, dome-shaped outermost layer of the eye that acts as a protective barrier and the eye's primary focusing element.

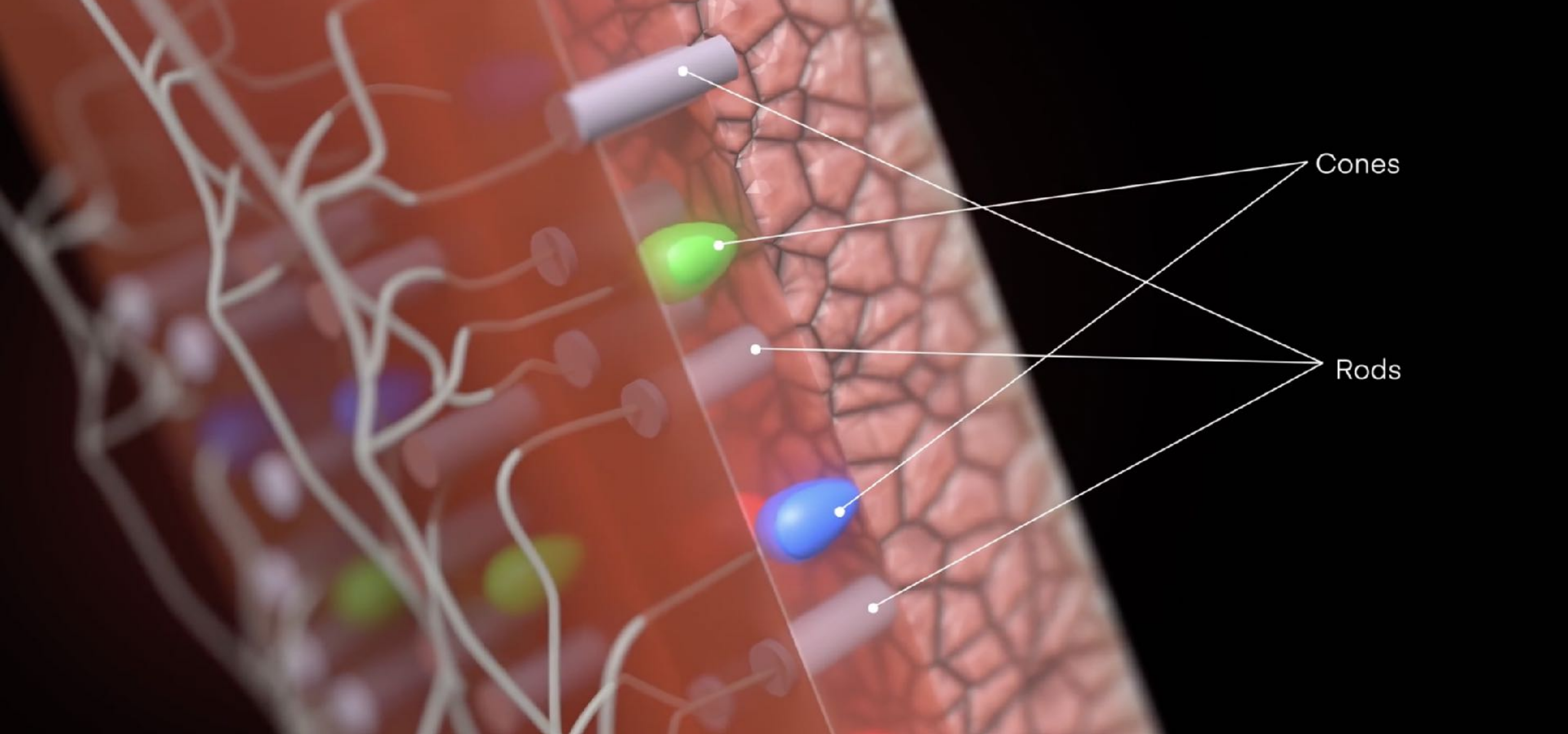
The **iris** is the colored, muscular part of the eye located between the cornea and lens, which controls pupil size to regulate light entering the eye.

The eye **pupil** is the black, circular opening in the center of the iris that regulates light entering the eye, typically ranging from 2–8 mm in diameter.

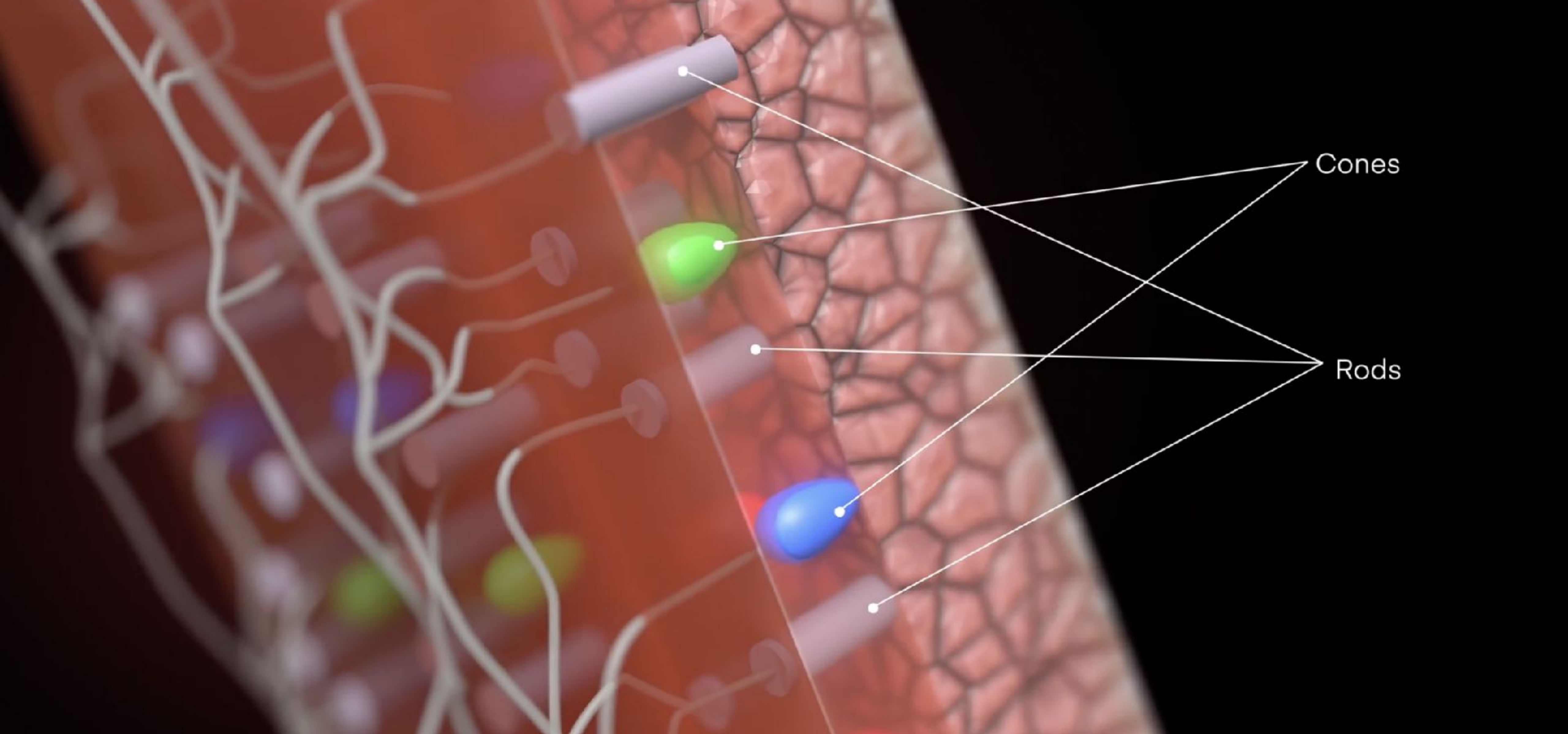
The eye **lens** (crystalline lens) is a transparent, biconvex, and elastic structure behind the iris that changes shape to focus light onto the retina.

The **retina** is a light-sensitive layer of tissue at the back of the eye that converts light into electrical signals for the brain, allowing vision.

The **optic nerve** is a bundle of over 1 million nerve fibers that transmits visual information from the retina to the brain, located at the back of the eye and extending toward the visual cortex.

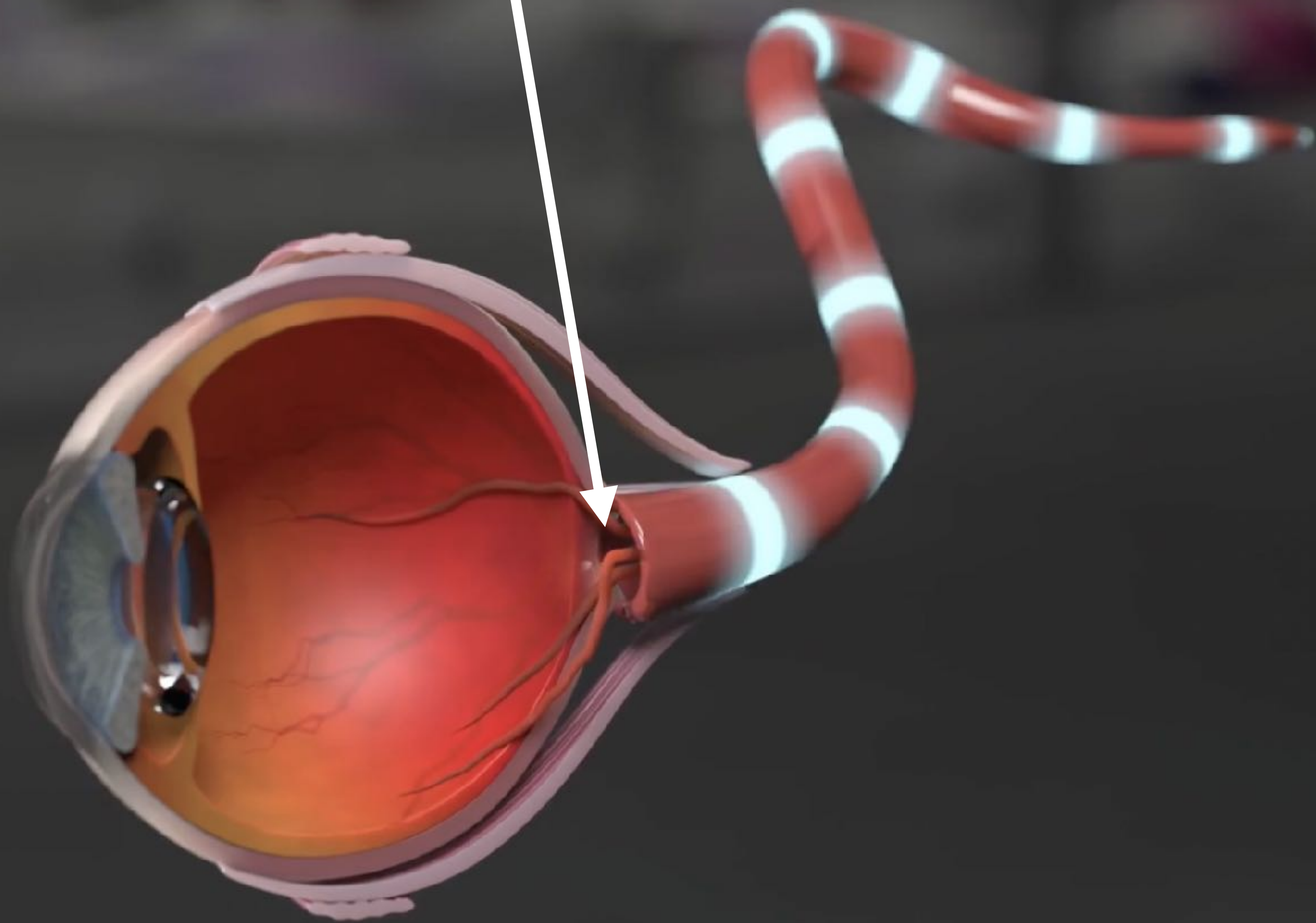


**Rods are 10,000 time more sensitive to light than the cones. They cannot detect color and are mostly on the sides of the eyes**

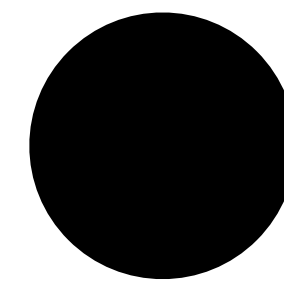
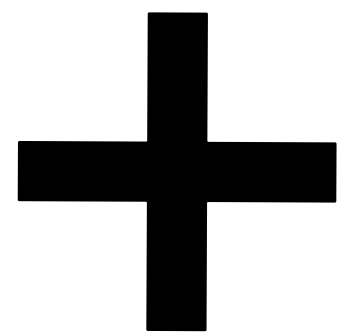


**Cones are mostly in the back of the eye and handle color vision and central vision**

There are no rods or cones where optic nerve connects to the eye.



# Blind Spot Test



The place where the optic nerve connects to the eye there are no photo receptors and so there is a blind spot.

# We need good spiritual eyesight

**Revelation 3:17–18 (KJV)** — 17 Because thou sayest, I am rich, and increased with goods, and have need of nothing; and knowest not that thou art wretched, and miserable, and poor, and **blind**, and naked: 18 I counsel thee to buy of me gold tried in the fire, that thou mayest be rich; and white raiment, that thou mayest be clothed, and that the shame of thy nakedness do not appear; and **anoint thine eyes with eyesalve, that thou mayest see.**